



# EQUINE STRATEGY

June 2023



Contents

PURPOSE ..... 3

ROLE OF COUNCIL ..... 3

VISION ..... 3

SETTING THE SCENE ..... 5

RELATIONSHIP WITH OTHER STRATEGIES ..... 5

EQUINE STRATEGIES ON A PAGE ..... 6

STRATEGIES AND ACTIONS ..... 7

    Economic and Social ..... 7

    Destinations and Trails ..... 10

Council acknowledges that we are on the traditional country of the Kurna people of the Adelaide Plains and pays respect to elders past, present and emerging. We recognise and respect their cultural heritage, beliefs and relationship with the land. We acknowledge that they are of continuing importance to the Kurna people living today.

Date	Version
July 2022	Council
Sept 2022	Consultation
May 2023	For Council Refinements in Green
May 2023	Updated

*Cover Photos – The foreshore flats at Parham – Lewiston Animal Husbandry Area – Urban growth impacting horse activity – Horse art can help tell Adelaide Plains animal story*

## **PURPOSE**

The purpose of the Equine Strategy is to identify Council's particular role to foster opportunities associated with the equine sector.

## **ROLE OF COUNCIL**

Council has roles associated with advocating and delivering infrastructure and services – sometimes via facilitating – that support the equine sector.

This Strategy describes Council's roles as:

- Plan
- Advocate
- Deliver/facilitate.

## **VISION**

Council's Strategic Plan 2020 – 2024<sup>1</sup> identifies the vision for the Council area.

These strategies include enviable lifestyle, emerging economy, remarkable landscapes and proactive leadership.

The Equine Strategy supports achievement of the aspired Vision by identifying Strategies and Actions based on and structured around the Strategic Plan 2021 – 2024 outcome areas of:

- *Enviably Lifestyle*
- *Emerging Economy*
- *Remarkable Economy*
- *Proactive Leadership*

---

<sup>1</sup> [apc.sa.gov.au/\\_data/assets/pdf\\_file/0023/355181/Adelaide-Plains-Council-Strategic-Plan-2021-2024](https://apc.sa.gov.au/_data/assets/pdf_file/0023/355181/Adelaide-Plains-Council-Strategic-Plan-2021-2024)

## Vision

### **Adelaide Plains is:**

**Productive: A leading supplier of primary produce to local, national and international markets.**

Proximity to markets and natural growing conditions provide competitive advantages for primary producers on the Adelaide Plains that has seen our economy emerge as a key contributor to the region's prosperity.

**Diverse: A more diverse community with access to a greater mix of local opportunities.**

Increased employment, services and education attracts and retains a diverse community that chooses to live, learn and work in the region.

**Location:** A lifestyle location connected to the Barossa, Coast and Adelaide.

Adelaide Plains is a quiet community that offers residents time and space with convenient access to the benefits of Greater Adelaide, the coast and the Barossa region.

**Welcoming: A proud, spirited and generous community.**

This is a place that everyone belongs, where community connection and care is strong and someone is always available to help when a neighbour is in need.

**Ambition: Advancing infrastructure and technology to foster a competitive local economy.**

Modern practice, research and innovation, and efficient access to export centres and local markets builds an economic environment and reputation that rivals the State's major primary productions regions. With employment opportunities diversifying and new housing products in abundance, Adelaide Plains will become the place of choice for the Northern Adelaide Plains.

**Leadership: A decisive and proactive Council.**

Our Elected Members share a vision of prosperity founded on courage, robust deliberation, transparency and forward thinking and investing.

**Attractive: A Place of choice for businesses, residents and visitors.**

Our townships are inviting, well cared for, filled with character and provide a range of services, facilities and accommodation that caters for all people and our landscapes, events and infrastructure provide memorable experiences.

## Tourism and Economic Development Strategy

### Five Themes

- Town Centres and Main Streets
- Business Support and Growth
- Food and Primary Industries
- Coastal Experiences
- Marketing and Branding

## SETTING THE SCENE

The equine sector has long been an important part of the economic and social life of Adelaide Plains.

This is associated with a diverse range of businesses directly or indirectly horse based, equine clubs located within Adelaide Plains or nearby, or residents with horses as part of their family life on rural allotments.

Adelaide Plains population is growing, as is the wider region. This places pressure on land, and also presents opportunities.

Identifying Council's particular role about the equine sector is important.

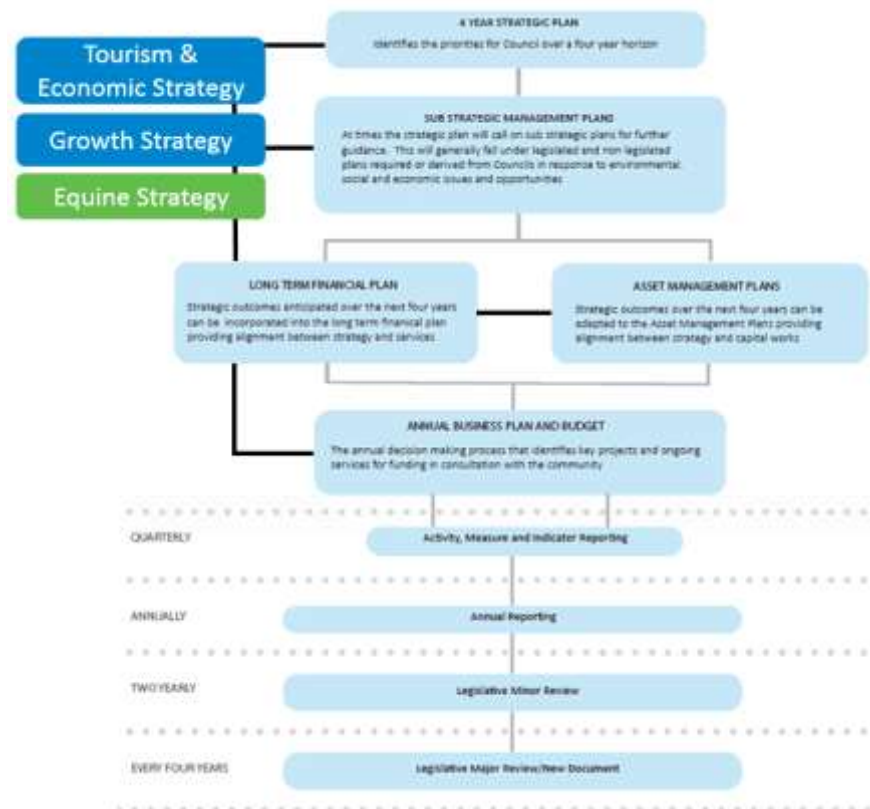
- Council maintains and builds infrastructure, be it roads, trails or parking, supporting equine interests as part of a community with diverse living, recreating and business interests.
- Council sets policy, be it local laws, through permits, or through the planning system for the use and development of land.
- Council works with equine peak bodies and government around the future of the equine sector. This includes advocating for reform, as well as applying for grants.

This strategy informs the above activity by Council.

The Equine Background Paper prepared through desktop investigations and engagement informs this strategy.

## RELATIONSHIP WITH OTHER STRATEGIES

The Equine Strategy is a sub strategic plan that is informed by and informs other strategic plans.



*How the Equine Strategy relates to Council's Other Plans*

## EQUINE STRATEGIES ON A PAGE

Economic and Social	Destinations and Trails
Work with <b>horse clubs and equine related businesses</b> to enable their future as appropriate.	Support proposed <b>International Equine Centre at Roseworthy Campus</b> .
Facilitate suitable range of <b>equine vet services</b>	<b>Lewiston and Two Wells Rural Living Areas</b> - Foster horse activity destination appeal through augmenting and growing trail experiences and further horse related attractors.
Ensure <b>statutory planning system</b> is equine friendly.	Progress opportunities to <b>augment equine activity in destinations</b> , such as horse clubs, towns and settlements.
Increase awareness about preparing for <b>horses in emergencies</b> .	Continue the historic level of horse activity at Parham and Pt Gawler, and work with DEW on other opportunities.
Increase awareness about <b>responsible land management of rural living lots</b> .	Progress opportunities to create <b>a network of off-road trails and calm country roads</b> able to be used for horses.
Educate riders about <b>appropriate behaviour in coastal areas</b> .	Progress opportunities to create <b>regional trails along the Gawler River</b> including able to be used by horses.
Establish suitable horse management measures to enable horse activities balanced with regard to residential living and visitor experience, and along the coast, shorebird conservation outcomes.	Provide suitable horse infrastructure, such as <b>float parking, signage, and wayfinding</b> informed by relevant guidelines.

## STRATEGIES AND ACTIONS

This part of the Equine Strategy forms the strategies and actions.

The strategies and actions are structured based on the Strategic Plan outcomes of *Enviably Lifestyle, Emerging Economy, Remarkable Landscapes and Proactive Leadership*.

Strategies are the strategies to be pursued to achieve the outcomes and Actions are how the strategies are to be achieved.

Economic and Social captures State and region wide trends and topics. Destinations recognises towns, settlements and certain horse places offer certain destination appeal. Trails can be destinations in their own right as well as connecting between different places.

	<b>Economic and Social</b>			
	<b>Strategy</b>	<b>Strategic Alignment</b>	<b>Rationale</b>	<b>Action</b>
1.	Work with horse clubs and equine based businesses to enable their future.	Emerging Economy Enviably Lifestyle	<p>Clubs for different equine purposes and equine related businesses are independent of Council. Clubs offer opportunities for young people for horse recreation and potential pathways for horse-based careers. ‘Club of the Future’ resources and support for successful clubs, including horse clubs, are available from the Office of Recreation, Sport and Racing (ORSR).</p> <p>Businesses, be it riding, training, farriers, therapy, or transport, are integral to Adelaide Plains future.</p> <p>Council can assist through information, networking, involvement, and facilitation, such as to grants.</p> <p>This may, for example, ensure local clubs are on relevant community organisation websites, are aware of support via ORSR, and local equine businesses are on business databases.</p>	Work with local clubs and businesses as part of day-to-day operations.

2.	Facilitate suitable range of equine vet services.	Emerging Economy Enviably Lifestyle	The University of Adelaide Roseworthy Campus provides 24/7 cover through their equine department <sup>2</sup> . The Campus has vets and nurses available and have specialist vets on call to cover all eventualities.	Raise awareness about available vet services.
3.	Ensure statutory planning system is equine friendly.	Emerging Economy Enviably Lifestyle	Residents and equine based businesses need a supportive planning system to enable suitable planning approvals. For example: <ul style="list-style-type: none"> <li>• Particular policy barriers exist associated with the Environment and Food Production Area.</li> <li>• Easy to access information may assist residents and businesses establish.</li> </ul>	Work with State Planning Commission and other Council's on policy and regulatory reform.  Ensure easy to access information is available. Promote as resources permit.
4.	Increase awareness about preparing for horses in emergencies.	Proactive Leadership	Household and business preparing ahead for what to do with horses in emergencies is critical. Many horse owners do not have a float. PIRSA are the lead agency for horses in emergencies	Work with PIRSA and local horse groups on awareness raising.  Ensure easy to access information is available.

---

<sup>2</sup> [Veterinary Health Centres | University of Adelaide](#)



				Promote as resources permit.
5.	Increase awareness about responsible land management of rural living lots.	Remarkable Landscapes	Feedback is that in Rural Living Areas valued for horse activity, some land owners find land management a challenge. This can result in risk of dust, and loss of greening and biodiversity.	Ensure easy to access land management information is available.  Promote as resources permit.
6.	Educate riders about appropriate behaviour in coastal areas.	Proactive Leadership	Coastal areas are of significance in terms of biodiversity and habitat. Inappropriate rider behaviour presents risks, be it manure spreading weeds, or footfall impacting soil.  These risks are also recognised within the Adelaide International Bird Sanctuary Management Plan.	Work with DEW, local horse clubs and horse peak bodies in communicating expectations of rider behaviour.
7.	Establish suitable horse management measures to enable horse activities balanced with regard to residential living and visitor experience, and along the coast, shorebird conservation outcomes.	Proactive Leadership	To achieve suitable horse management, Council has various measures it can use: <ul style="list-style-type: none"> <li>• Signs that meet the By-Laws and allow horses to be ridden on public land</li> <li>• Fostering low traffic speed environments better suited for horses</li> <li>• Rider information</li> <li>• Establishing suitable shared paths and float parking areas</li> <li>• Communication with riders and clubs.</li> </ul>	Investigate and engage about suitable measures as needed.

	Destinations and Trails			
	Strategy	Strategic Alignment	Rationale	Action
8.	Support proposed International Equine Centre at Roseworthy Campus.	Emerging Economy Enviably Lifestyle	<p>Roseworthy Campus with an international equine centre offers a key attractor for residents and businesses to locate in Adelaide Plains. The Campus is the only accredited all animal hospital in SA. The Campus presents equine educational pathways.</p> <p>Noting the equine centre is state level infrastructure and State peak bodies are key drivers. Office of Recreation, Sport and Racing provide business case advice for sport infrastructure greater than \$2M. Council support recognising the opportunity and its potential benefits for Adelaide Plains makes sense.</p> <p>RDA Barossa Gawler Light Adelaide Plains are the lead proponent.</p>	Work with RDA Barossa as appropriate
9.	Lewiston and Two Wells Rural Living Areas - Foster horse activity destination appeal through augmenting and growing trail experiences and further horse related attractors.	Emerging Economy Enviably Lifestyle Remarkable Landscapes	<p>This large area is established for the purpose of rural living and animal husbandry.</p> <p>Many residents have horses, numerous horse-based businesses are established as well as the Two Wells Pony Club, Adelaide Plains Equestrian Club and Two Wells Trotters at Hams Park. The Lewiston Trails are used by horse riders.</p> <p>Augmenting horse-based experiences offer lifestyle opportunities for residents, clubs and local businesses, and reinforces the animal related purpose.</p> <p>Further investigations should consider:</p>	Undertake further investigations with relevant partners on options to reinforce the areas equine function.

			<ul style="list-style-type: none"> <li>• An extended trail network able to be shared by walkers, cyclists and horse riders connecting north, east, west to Two Wells and south to Gawler River</li> <li>• A horse adventure park providing opportunities for riders and horses to learn different skills and to have ‘adventure’ experiences</li> <li>• Horse themed public art to share the horse story for visitors and residents, and to reinforce the animal husbandry role.</li> <li>• Events, such as an annual ride and fun day along the trails.</li> </ul>	
10.	Progress opportunities to augment equine activity in destinations, such as horse clubs, towns and settlements.	Emerging Economy Enviably Lifestyle Remarkable Landscapes	Some of this relates to a suitable statutory planning system, as well as involving equine clubs and businesses in networking. The potential role of intrastate/interstate horse movement augmenting destinations is part of this. Opportunities could be considered as part of growth planning, including town and settlement plans.	Consider as opportunities arise, including as part of town and settlement planning.
11.	Continue the historic level of horse activity at Parham and Pt Gawler, and work with DEW on other opportunities.	Emerging Economy Enviably Lifestyle Remarkable Landscapes	<p>Parham and Pt Gawler have historically been coastal places where riders have enjoyed horse based coastal experiences. This includes across extended periods of the day, a different offering than available within metropolitan Adelaide.</p> <p>The Adelaide International Bird Sanctuary Management Plan is cautious about horses. Acknowledging AIBSNP-WP is under co-management arrangements with the Kurna Nation, investigations and discussions with Department of Environment and Water will be needed to identify any opportunities and in monitoring ongoing horse activity.</p>	<p>Continue to enable historic level of horse activity at Parham and Pt Gawler</p> <p>Work with Kurna Nation and DEW about any coastal horse experience opportunities.</p>

12.	Progress opportunities to create a network of off-road trails and calm country roads able to be used for horses.	Emerging Economy Enviably Lifestyle Remarkable Landscapes	<p>A trail strategy is important to foster increased trail experiences, including for horse riders.</p> <p>East west trails and country roads – called calmer to recognise potential horse use - connecting from Kapunda to Mallala, Two Wells and Lewiston, as well as north south from Gawler River/Lewiston to Mallala, present opportunities to connect to regional trails, augmenting visitor experiences.</p> <p>Trails are likely to be shared, e.g., with walkers, cyclists.</p> <p>Investigations will need to consider:</p> <ul style="list-style-type: none"> <li>• Land control</li> <li>• Safety</li> <li>• Relevant guidelines e.g., Austroads Guide Part 6A: Pedestrian and Cycle Paths</li> <li>• Overall appeal of potential trails with respect to needed investment to realise</li> <li>• Level and nature of traffic, recognising road freight and agribusiness needs.</li> <li>• Pt Wakefield Highway is a barrier for horses to cross and horse activity is to continue at historic levels at the coast (and not grow). Thus focussing trails east of Pt Wakefield Highway makes sense.</li> <li>• Use of traffic signs, such as ‘Horse Beware’</li> <li>• Use of signs ‘permitting’ horses to ride on local government land where relevant to enable trail use</li> </ul>	<p>Seek resources for trail investigations to occur.</p> <p>Include horse peak bodies in proposals for further trails.</p>
13.	Progress opportunities to create regional trails along the Gawler River	Emerging Economy Enviably Lifestyle Remarkable Landscapes	<p>Gawler River is in proximity to Lewiston’s animal husbandry activity as well as planned urban growth in Riverlea, Virginia and Angle Vale. Noting ongoing flood management investigations, the opportunity to realise shared trails – including for horses – as part of a regional attractor should be pursued. This should consider the opportunity for a shared trail under the Port Wakefield Highway bridge.</p>	<p>Consider regional trails including for horse use along the Gawler River as opportunities arise.</p>

	including able to be used by horses.			
14	Provide suitable horse infrastructure, such as float parking, signage, and wayfinding informed by relevant guidelines.	Enviably Lifestyle Remarkable Landscapes	<p>Particular infrastructure is needed associated with horses, such as clarity about where to ride, e.g., signage, where to park floats, and horse tie rails.</p> <p>Detailed investigations and engagement are needed to identify the necessary range of infrastructure for particular locations.</p> <p>The float parking investigations at Parham and proposed car park upgrade at Pt Gawler are current investigations being undertaken with input from DEW.</p>	Provide suitable infrastructure after suitable investigations and when resources permit.